

Spur Cross Ranch Conservation Area

Trail Code	Trail Name	Length Mi	Length (Km)	Uses Allowed	Rating	Elev Diff Ft	Elev Diff M
DF	Dragonfly	2.6	(4.2)	H	■	257	78
EM	Elephant Mountain	2.0	(3.3)	H	◆	634	193
MT	Metate	0.8	(1.4)	H	●	76	23
SX	Spur Cross	5.2	(8.4)	S	■	487	148
TR	Tortuga	1.2	(2.0)	H/S	■	179	55
TW	Towhee	0.2	(0.3)	H	●	15	5

Maricopa Trail* (Multiple use - SX)
 Maricopa Trail (Hiker only - DF)
 Other Park Trail*
 Primitive Route*
 Trailhead

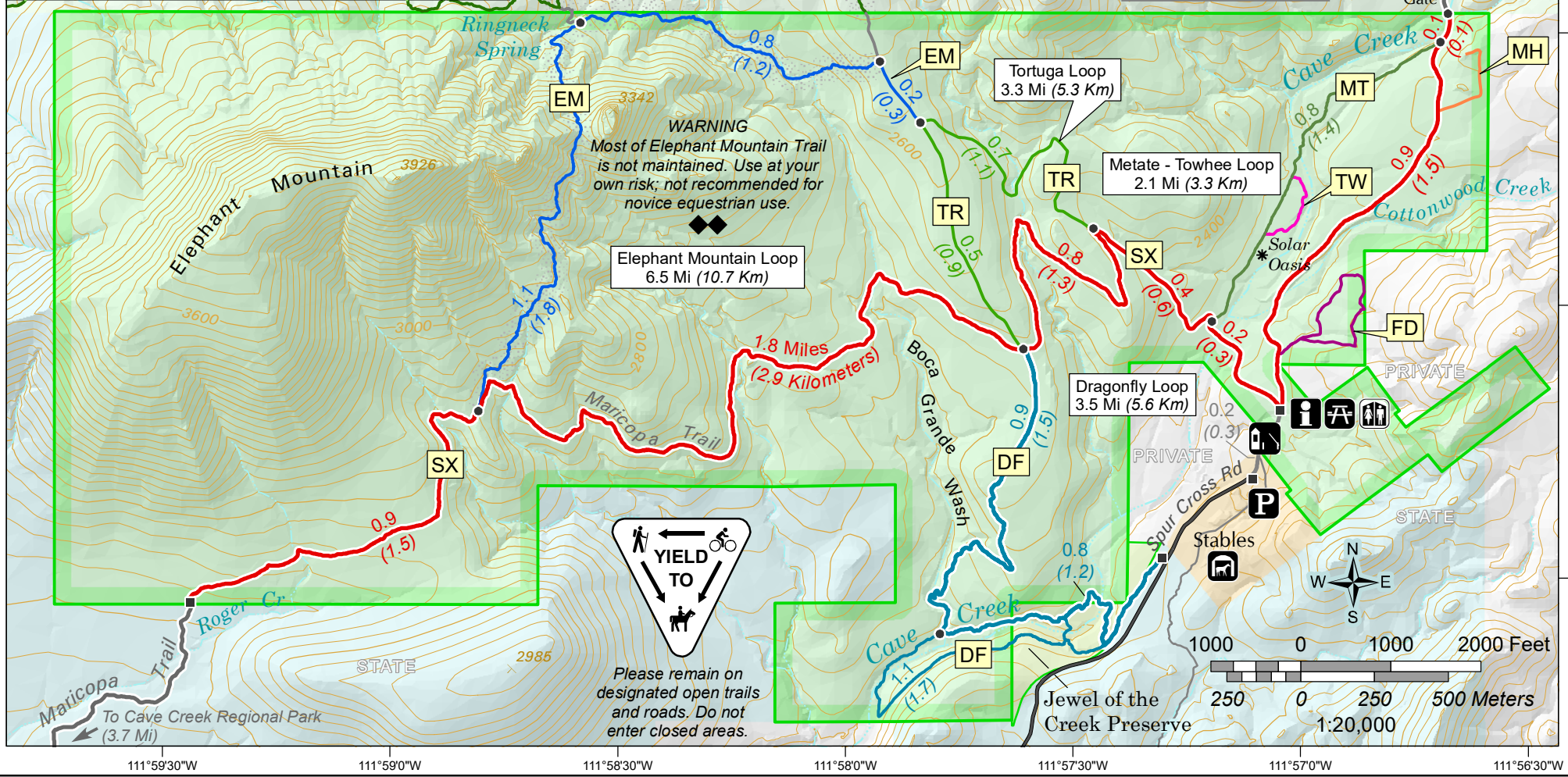
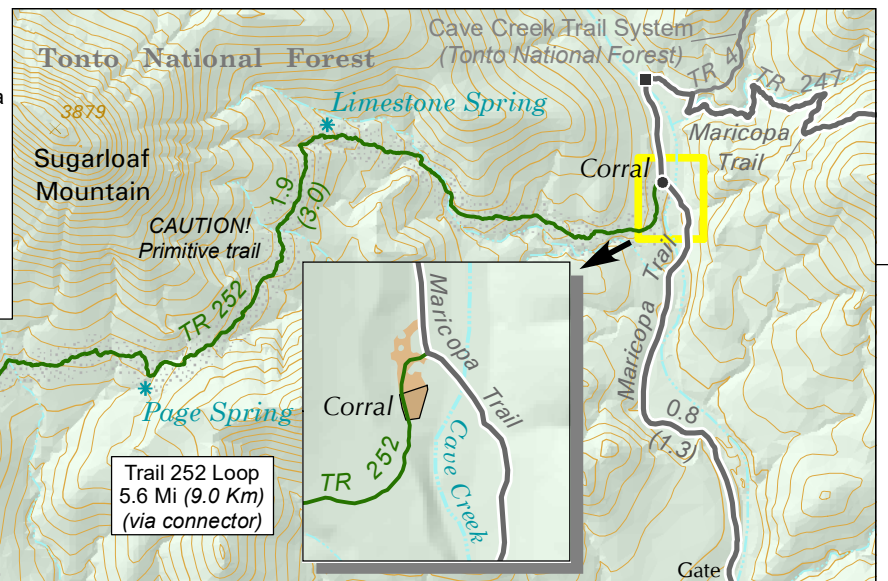
Public Parking & Staging Area
 Entry Station
 Info Kiosk
 Picnic Table
 Restrooms (Portable)

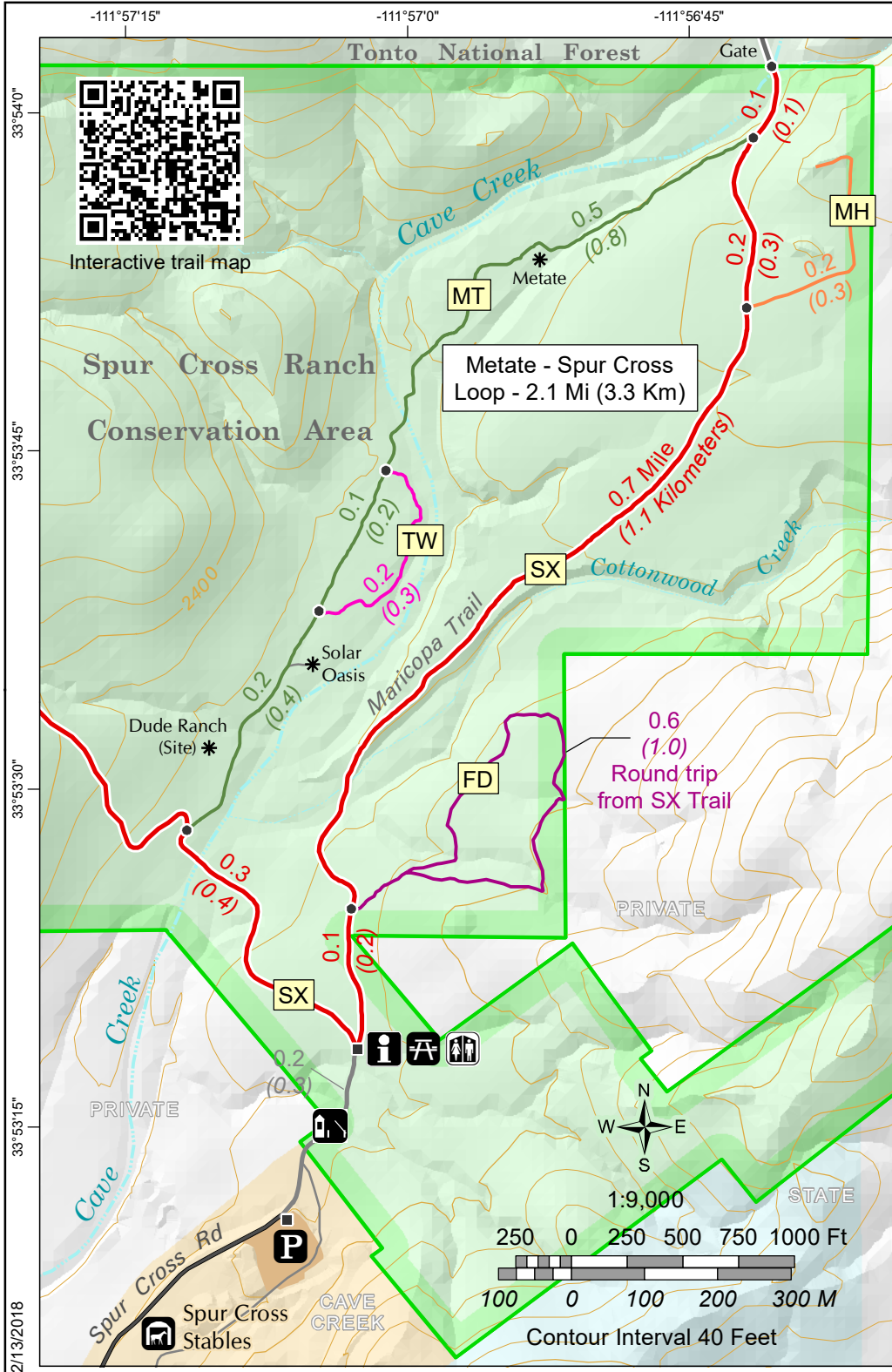
*Trail color varies by name.

M = Multiple-use (all non-motorized access allowed)
 H/E = Hike/Equestrian only
 H = Hike Only

Easy
 Moderate
 Extremely Difficult

- Lengths shown above are one-way; Dragonfly Trail is total tread.
- Lengths on map are for selected segments between trail junctions (●), or junction and trailhead.
- Lengths are approximate and, due to rounding, segments on map may not add up to trail lengths above.
- Elev Diff is difference in elevation between low and high points, which may or may not match end points of trail. Gross change may be greater.





Welcome to Spur Cross Ranch Conservation Area

Spur Cross Ranch Conservation Area is the newest addition to Maricopa County's Regional Park System. The conservation area is very scenic, encompassing 2,154 acres of diverse, rugged upland Sonoran desert. It contains numerous archaeology sites, portions of Cave Creek and the remnants of early mining and ranching occupation. Several floral communities present in the conservation area provide a rich habitat for a diverse assemblage of wildlife.

On January 9, 2001, documents were signed by Governor Jane Hull for the State of Arizona, Supervisor Jan Brewer for Maricopa County and Mayor Vincent Francia for the Town of Cave Creek, ensuring the conservation of this special property. Spur Cross Ranch is designated a "limited-use public recreation and conservation area." Plans include the development of a visitor center, restrooms and additional trails.

Park Rules

- Please:
- All public access on Spur Cross is non-motorized.
 - Observe signs on trails and park rules.
 - Remain on designated "open" trails and roads.
 - Do not enter closed areas.
 - Do not enter archaeological sites or collect any artifacts.
 - Leashed pets only.

Trails

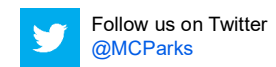
Ranger-guided hikes are offered to sensitive riparian areas and archaeological sites. Unguided, public use is currently limited to the trails indicated on the map.

Note: The hiking trails are unimproved with areas of unstable footing. When hiking on the primitive trails plan one hour per mile of trail. Travel can be arduous if you are not prepared. Always carry plenty of water, use protection from the sun, and let someone know where you are going. Please enter the Maricopa County Sheriff's Office phone number of (602)-876-1000 into your cell phone prior to starting a hike. In case of emergency, dial 911.

If recent heavy precipitation has occurred, many of the trails can be expected to be quite muddy and where trails cross the creek, they may be flooded.

DF – Dragonfly Trail: Moderate, hikers, 1.6 - 2.0 mi (2.5 – 3.2 km), depending on route. A beautiful trail that links the Spur Cross uplands with riparian habitat along Cave Creek and the Jewel of the Creek loop trail. Another access point into the Maricopa Regional Trail system.

EM - Elephant Mountain Trail: Very difficult, hikers and equestrians, 2.1 mi (3.3 km). Primitive route - not



maintained. Use at your own risk; this trail is not recommended for novice equestrians.

FD – Fairy Duster Loop Trail: Easy, hikers, equestrians, and mountain bikers, 0.6 mi (1 km) roundtrip. This trail loops around on the terrace above the south side of Cottonwood Wash and provides fine views of this large drainage and the surrounding area.

MH – Mariposa Hill Trail: Easy, hikers, equestrians, and mountain bikers, 0.4 mi (0.6 km) roundtrip. This short out-and-back trail, named for the Mariposa Desert Lily that blooms here in the springtime, leads up to the top of Mariposa Hill and offers a wonderful panoramic view of the conservation area and the neighboring Tonto National Forest.

MT - Metate Trail: Easy, hikers, 0.8 mi (1.4 km). This is a short but spectacular trail that weaves through the mesquite bosque and flood terraces of Cave Creek. Some the largest saguaro cacti in the conservation area are found along this trail. Visitors are also provided views of the site of the Spur Cross Guest Ranch, the Solar Oasis, and an outstanding bedrock mortar, or metate.

SX - Spur Cross Trail: Moderate, hikers, equestrians and mountain bikers, 5.3 mi (8.5 km). This is part of the Maricopa Trail and also provides access to the Cave Creek Trail System in Tonto National Forest.

TR - Tortuga Trail: Moderate, hikers and equestrians, 1.2 mi (2.0 km) This trail travels to the top of a mesa for fantastic views of the conservation area.

TW - Towhee Trail: Easy, hikers, 0.2 mi (0.3 km). This short spur trail branches off the Metate Trail for outstanding views of Cave Creek. Named in honor of the Abert's Towhee, a bird that inhabits the mesquite forest through which the trail passes.

Length of each trail is approximate and does not include distance from parking area to that trail.

Other Existing Trails: These trails are currently used for ranger-guided hikes only. See the ranger-guided hike schedule in the kiosk or at: <http://www.maricopacountyparks.net/events/?ParkId=12>

Hours of Operation and Contacts

Spur Cross Ranch Conservation Area is open for day-use only. Sun – Thurs: 6 a.m. to 8 p.m. and Fri & Sat: 6 a.m. to 8 p.m. A per-person entry fee is required. Please use the self-pay station located at the entry gate. For further information please contact the park staff at (480) 488-6623.

Mailing Address:
Spur Cross Ranch Conservation Area
37622 N. Cave Creek Road
Cave Creek, AZ 85331

Spur Cross Telephone: (480) 488-6623
E-mail: spurcrossranch@mail.maricopa.gov

Parks HQ Telephone: (602) 506-2930 or (928) 501-9200
E-mail: maricopacountyparks@mail.maricopa.gov



DISCLAIMER: This map is a graphical representation designed for general reference purposes only. Viewer/User agrees to indemnify, defend and hold harmless Maricopa County, its officers, departments, employees and agents from and against any and all suits, actions, legal or administrative proceedings, claims, demands or damages of any kind or nature arising out of the use of this map, or the data contained herein, in its actual or altered form.