









Jewel of the Creek Preserve

Desert Foothills Land Trust

Park Rules
 Please:
 - Remain on designated trails.
 - Do not enter closed areas.
 - Take only pictures and leave only memories.
 - Pick up after your pet.

Hours of Operation and Contact
 Jewel of the Creek Preserve is open for day-use only.
 Sun - Thurs: 6a.m. to 8p.m. and Fri & Sat: 6a.m. to 10p.m.
 For further information please contact:

Desert Foothills Land Trust
 480.488.6131
 www.dflt.org

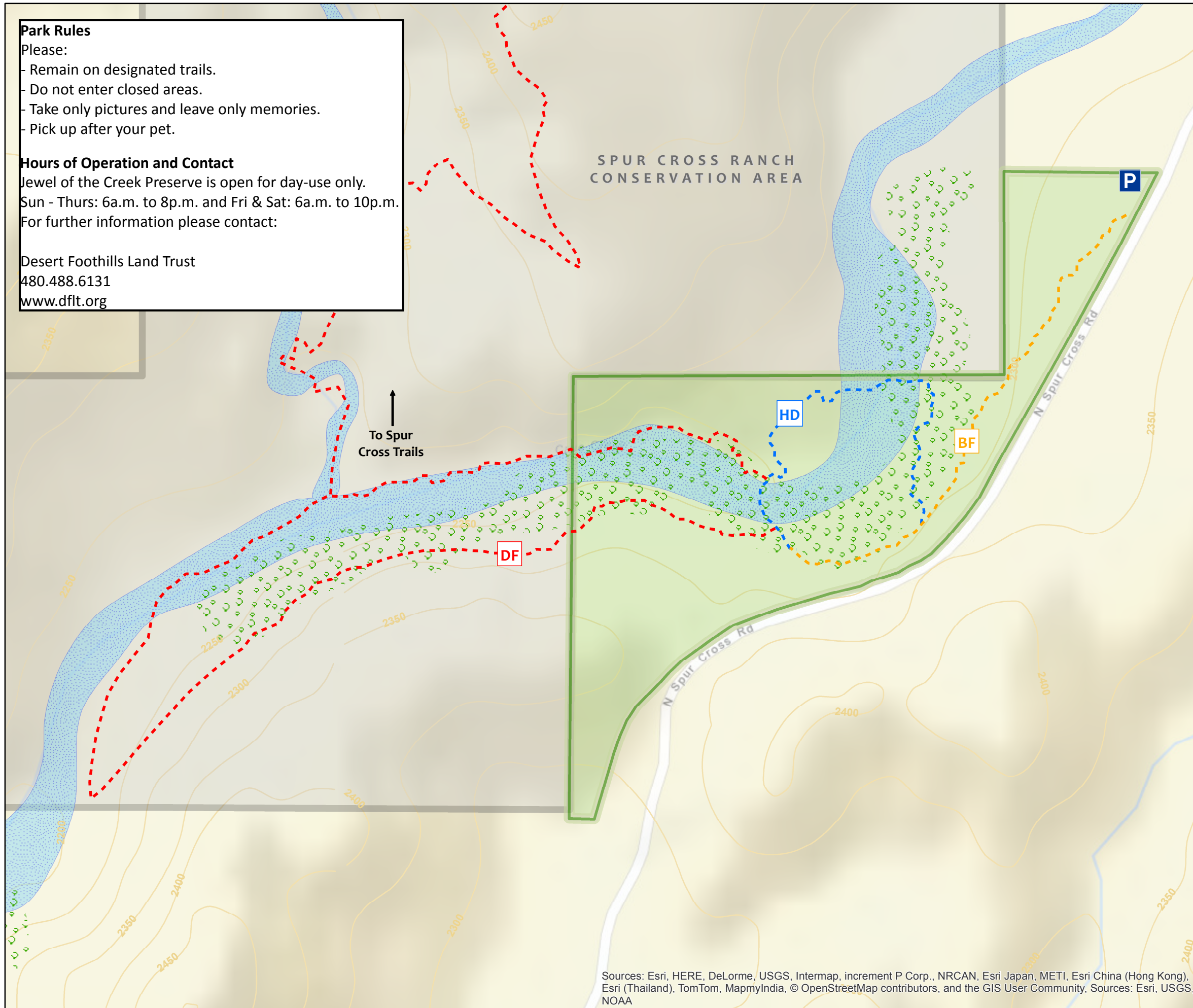
-  **P** Parking Area
-  **Dragonfly Trail Loop - DF**
-  **Harry Dalton Trail Loop - HD**
-  **Barrier Free Section -BF**
-  **Jewel of the Creek**
-  **Riparian Forest**
-  **Cave Creek Wash**
-  **Spur Cross Ranch**

DF - Dragonfly Trail Loop
 Moderate to easy, hikers only. A beautiful trail that traverses the unique riparian area surrounding Cave Creek. This trail also connects to other trails throughout Spur Cross. To reach these trails, take the spur off to the north at Boca Grande Wash. (Loop trail 1.03 mi)

HD - Harry Dalton Trail Loop
 Moderate to easy, hikers only. This trail circles through an incredible mesquite bosque, crosses Cave Creek and leads through a towering stand of giant saguaros. (0.62 mi)

BF - Barrier Free* Section of Harry Dalton Trail Loop
 Moderate to easy, hikers only. *This portion of the trail is accessible to many, but due to erosion it is no longer barrier free and accessible to all. Please note the trail surface is rocky and uneven in areas and the hill contains some steeper slopes. This trail was built in loving memory of Travis Warren and all those who served our Country in the military. (0.32 mi)

Always remember to bring plenty of water, use protection from the sun and let someone know where you are going. Please enter the Maricopa County Sheriff's Office phone number of 602.876.1000 into your phone prior to hiking. In case of emergency dial 911.



Sources: Esri, HERE, DeLorme, USGS, Intermap, increment P Corp., NRCAN, Esri Japan, METI, Esri China (Hong Kong), Esri (Thailand), TomTom, MapmyIndia, © OpenStreetMap contributors, and the GIS User Community, Sources: Esri, USGS, NOAA

0 120 240 480 720 960 Feet

